



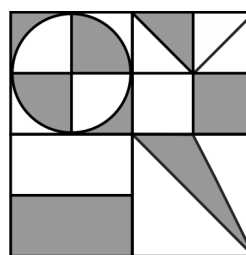
**CLASS : 7 SAMPLE QUESTIONS**

*The Actual Question Paper Contains 35 Questions. The Duration of the Test Paper is 40 Minutes.*

- The product of the given 11 fractions is:  
 $\left(1 - \frac{1}{3}\right)\left(1 - \frac{1}{4}\right)\left(1 - \frac{1}{5}\right)\left(1 - \frac{1}{6}\right)\dots\dots\dots\left(1 - \frac{1}{13}\right)$   
 (A)  $\frac{1}{13}$  (B)  $\frac{16}{13}$  (C)  $\frac{2}{13}$  (D)  $\frac{12}{13}$
- What is the least number which when divided by 6, 9, 11 and 12 leaves remainder 5 in each case?  
 (A) 401 (B) 391 (C) 396 (D) 408
- The value of  $\frac{100^{97} + 100^{100}}{100^{97}} - 1$  is equal to:  
 (A)  $10^5$  (B)  $10^6$  (C)  $10^8$  (D)  $10^4$
- If  $x^2 + \frac{1}{x^2} = 6$ , the value of  $\left(x - \frac{1}{x}\right)$  is:  
 (A) 4 (B) 1 (C) 2 (D) 3
- A student has to secure 33% marks to pass. He got 349 marks and failed by 47 marks. Find the maximum marks to be scored.  
 (A) 1000 (B) 1200 (C) 1500 (D) 800
- In the given figure, it is given that  $PQ \parallel RS$ ,  $\angle MRS = 116^\circ$  and  $\angle PMR = 118^\circ$ . Determine the value of  $x$ .  

 (A) 124 (B) 126 (C) 122 (D) 128
- If  $A = \{1, 5, 6, 7, 8, 10\}$  and  $B = \{2, 4, 6, 8\}$ , then which one of the following statements is incorrect?  
 (A)  $A \cup B = \{1, 2, 4, 5, 6, 7, 8, 10\}$   
 (B)  $A \cap B = \{6, 8\}$   
 (C)  $A - B = \{1, 5, 7, 10\}$   
 (D)  $B - A = \{1, 2, 4, 10\}$

- Find the reciprocal of the fraction represented by the shaded parts in the given figure.



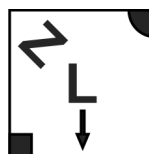
- (A)  $\frac{32}{9}$  (B)  $\frac{32}{11}$  (C)  $\frac{32}{13}$  (D)  $\frac{96}{41}$

- Which one of the following numbers will replace the question mark (?) in the number series given below?

102, 96, 89, 81, 72, ?, 51

- (A) 63 (B) 61 (C) 60 (D) 62

- Find the water image of the given figure.



-----Water

- (A) (B)
- (C) (D)

**ANSWERS**

1. (C) 2. (A) 3. (B) 4. (C) 5. (B) 6. (B) 7. (D) 8. (C) 9. (D) 10. (C)