



Total Questions : 35

Time : 1 hr.

PATTERN & MARKING SCHEME			
Section	(1) Logical Reasoning	(2) Science	(3) Achievers Section
No. of Questions	5	25	5
Marks per Ques.	1	1	2

**SYLLABUS**

**Section – 1 :** Patterns, Odd One Out, Measuring Units, Geometrical Shapes, Analogy, Ranking Test, Grouping of Figures, Embedded Figures, Coding-Decoding.

**Section – 2 :** Plants, Animals, Human Body, Food, Housing and Clothing, Family and Festivals, Good Habits and Safety Rules, Transport and Communication, Air, Water and Rocks, Earth and Universe.

**Section – 3 :** Higher Order Thinking Questions - Syllabus as per Section – 2.

**LOGICAL REASONING**

1. \_\_\_\_\_ is needed to buy the toy train shown below.

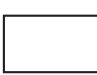




- (A) One 100-rupee note and Two 5-rupee notes
- (B) One 100-rupee note and Two 10-rupee notes
- (C) Two 50-rupee notes and Three 10-rupee notes
- (D) One 100-rupee note and One 10-rupee note

2. Number of pencils in each three equal groups of given pencils is \_\_\_\_\_ .



- (A) 5
- (B) 3
- (C) 6
- (D) 7

3. If  is related to , then in the same way  is related to \_\_\_\_\_.

- (A) 
- (B) 
- (C) 
- (D) 

**SCIENCE**

4. The given figure shows a black box containing an object. Kunal put his hand into the box and made the following comments.

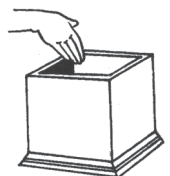
It is cold.

It is rough.

It is hard.

Which sense organ did Kunal use to make these descriptions?

- (A) Ear
- (B) Skin
- (C) Tongue
- (D) Nose



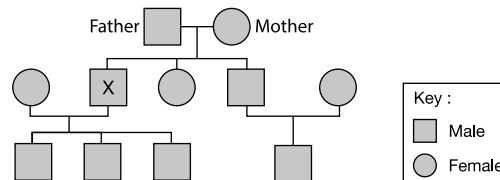
5. My father's nephew or niece is my  
 (A) Cousin (B) Uncle (C) Aunt (D) Brother-in-law.
6. We wear \_\_\_\_\_ clothes in winter to keep ourselves warm.  
 (A) Cotton (B) Nylon (C) Woollen (D) Silk
7. Which part of the given plant makes food?



- (A) P (B) S (C) Q (D) R
8. Which of the following modes of transport is pulled by animals?  
 (A) Cycle (B) Tonga (C) Jeep (D) Car

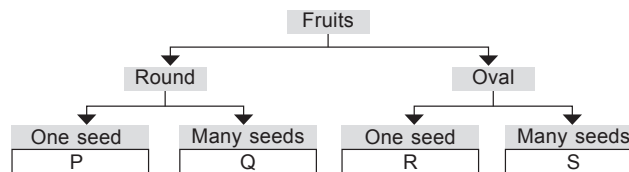
### ACHIEVERS SECTION

9. Study the given family tree carefully.



How many nephews does 'X' have?

- (A) Three (B) Four (C) One (D) None
10. Study the given flow chart carefully. In which group (P, Q, R and S) fruit of kiwi can be placed?



- (A) P (B) Q (C) R (D) S

SPACE FOR ROUGH WORK

### ANSWERS

- NSO – 1. (C) 2. (A) 3. (A) 4. (B) 5. (A) 6. (C) 7. (C) 8. (B) 9. (C) 10. (D)